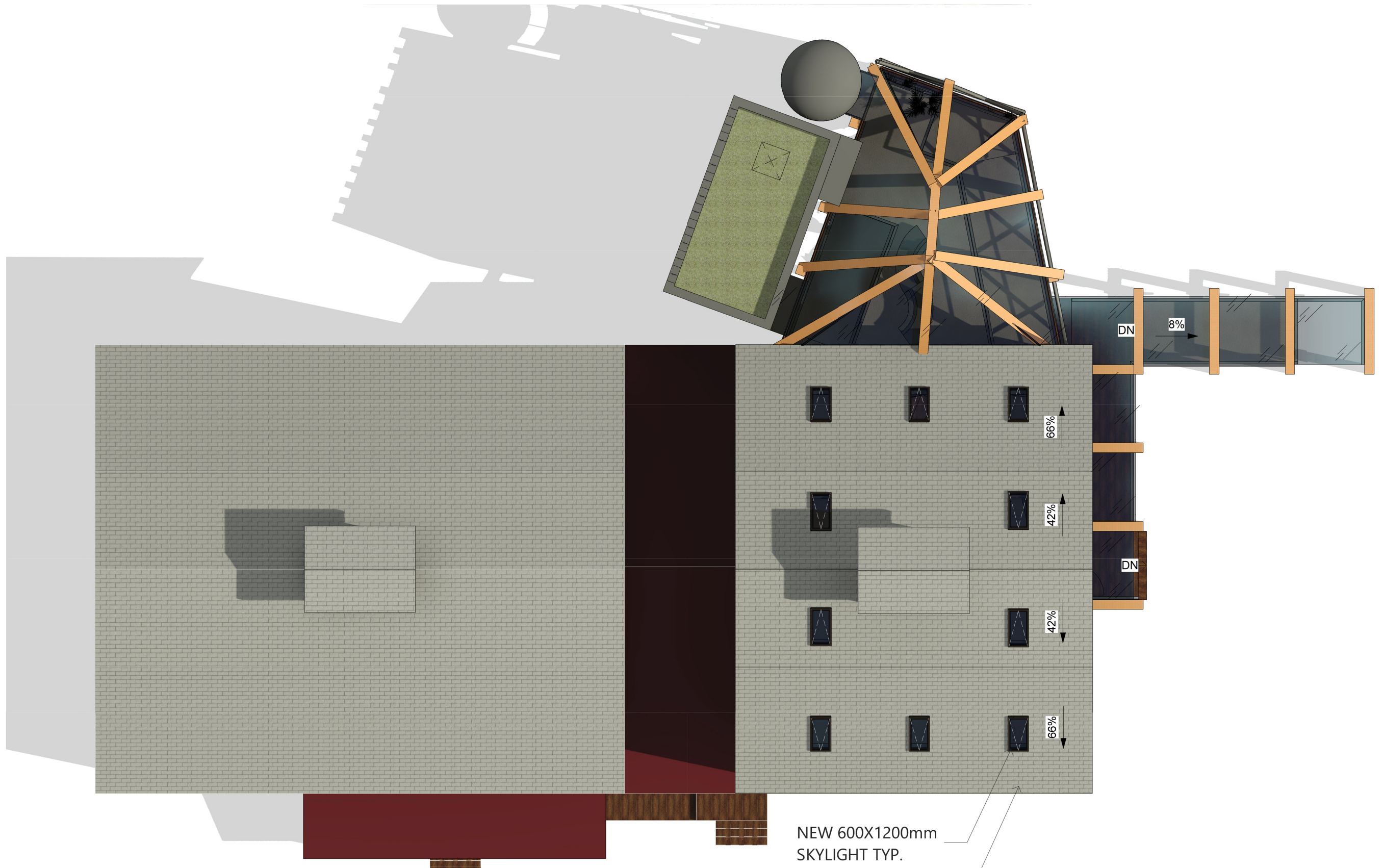


- 1 ACCESSIBLE SHARED PARKING
- 2 EV CHARGING STATION
- 3 ENCLOSED RAMP W/
INTEGRATED SOLAR PANELS
- 4 SECONDARY ACCESSIBLE ENTRANCE
- 5 MAIN ACCESSIBLE ENTRANCE
- 6 VEGETATION/WATER FOUNTAIN
- 7 BIKE RACK
- 8 WASTE MANAGEMENT
- 9 OUTDOOR SEATING/BARBEQUE

0 5 m 10 m





NEW 600X1200mm
SKYLIGHT TYP.

EXISTING ROOF

0 5 m

